

Features

1. 300A ;
Intermittent 300A load.
2. ;
It has two sets of normally open and two sets of normally closed contacts.

at23

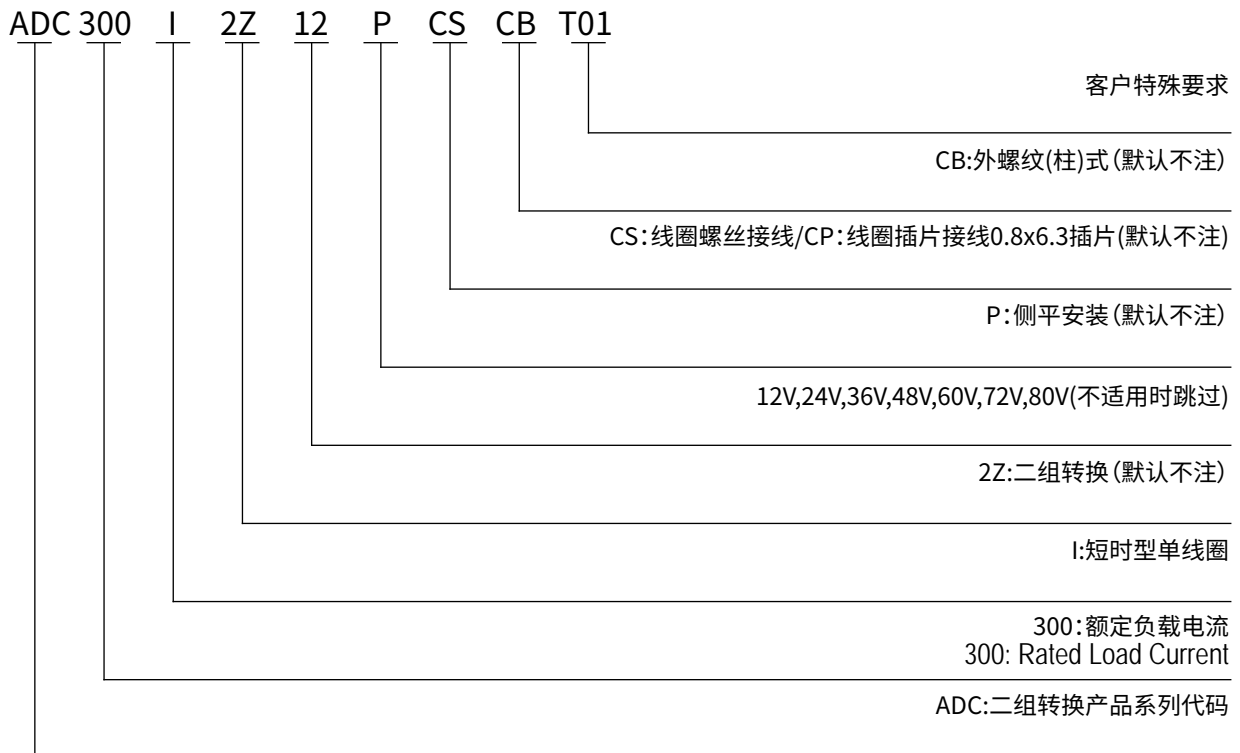
Performance Parameters at23

Contact Arrangement	2K (2@A), 2B (2@C)	
	30_	
	80_ H(Sf 80A)	
	4W 1e	30_ e
	-40 p85	30_ e
	? 6	50HI /60HI 1500HAC/1_ [
	3.5Y,10p200HI ,1/2	50HI /60HI 1500HAC/1_ [
	5 p95 DH	100? 1_ [
	86_ _ *51_ _ *78_ _	50? 1_ [
	20000	50Y
	3-6@_	
/	/	

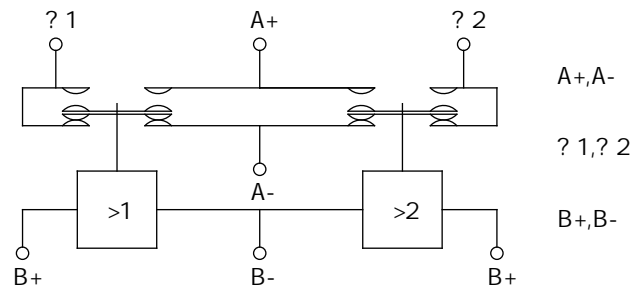
ADC300I ADC300I Coil Parameters

			Coil Resistance	Coil Power Consumption
12H	70% Ge	5% -40% Ge	6 f 10%	24I f 10%
24H	70% Ge	5% -40% Ge	24 f 10%	24I f 10%
36H	70% Ge	5% -40% Ge	54 f 10%	24I f 10%
48H	70% Ge	5% -40% Ge	96 f 10%	24I f 10%
60H	70% Ge	5% -40% Ge	150 f 10%	24I f 10%
72H	70% Ge	5% -40% Ge	216 f 10%	24I f 10%

Model Coding



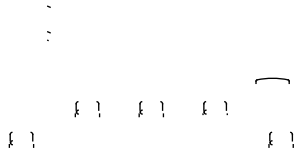
Wiring Diagram



ADC300I
ADC300I I [d] Y D[SYdS_

Outline Installation Dimension Drawing

ADC300ICE



4-? 6
>aSV I [d Y 4-? 6
3.0-6.0@._

3-? 3
0.5-0.8@._

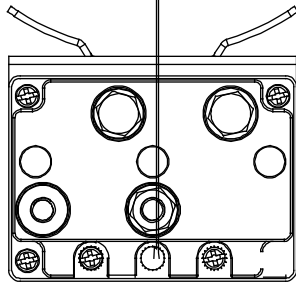
ADC300I

4-? 6
3.0-6.0@._

3-0.8j 6.3
Spade Terminal

Outline Installation Dimension Drawing

ADC200IKCE



4-? 6
>aSV I [d] Y 4-? 6
3.0-6.0@._

3-? 3

0.5-0.8@._

ADC200IK

4-? 6

3.0-6.0@._

3-0.8j 6.3

Spade Terminal

1.