

Features

1. 200A ;
Continuous 200A load.
2. ;
It has one set of normally open contacts.

at23
Performance Parameters at23

Contact Arrangement	1K (1NO)	
	0.5m	
	80mV (at 200A)	
	7le, 1s	30ms
	-40 ~85	30ms
	M8	50Hz/60Hz 1500VAC/1min
	3.5g,10~200Hz,1/2	50Hz/60Hz 1500VAC/1min
	5 ~95 RH	100M 1min
	85x56x86mm	50M 1min
	20000	5g
	6-10N.m	
/	/	

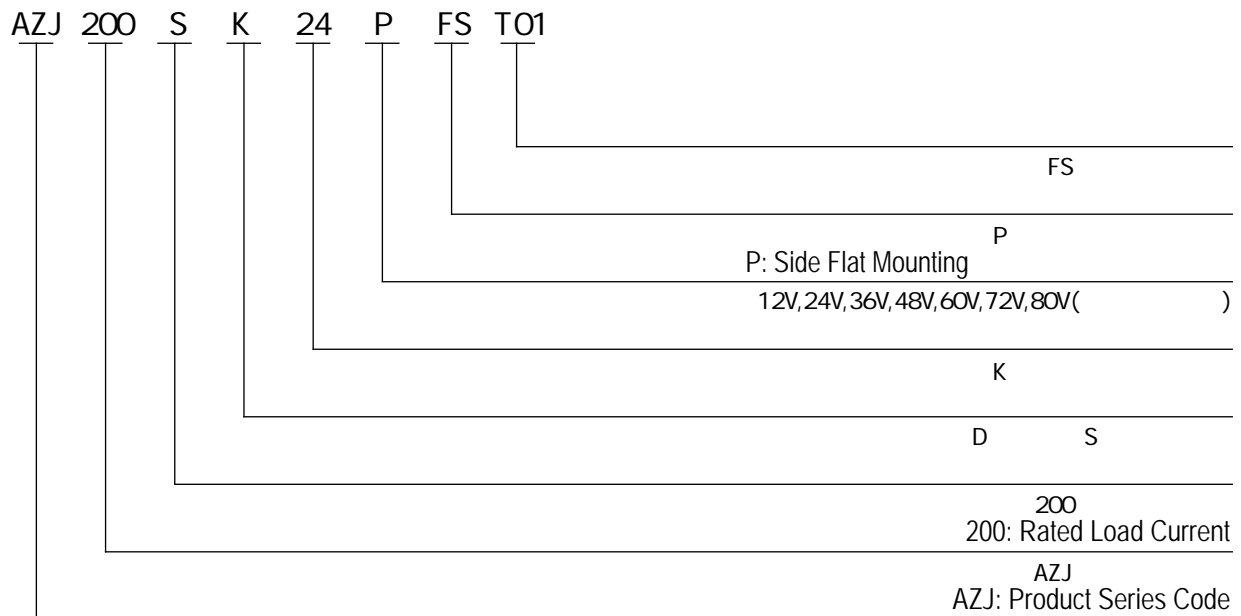
AZJ 200S AZJ200S Coil Parameters

			Coil Resistance	Coil Power Consumption
12V	70% Us	5% -40% Us	16 ± 10%	9W± 10%
24V	70% Us	5% -40% Us	63 ± 10%	9W± 10%
36V	70% Us	5% -40% Us	144 ± 10%	9W± 10%
48V	70% Us	5% -40% Us	256 ± 10%	9W± 10%
60V	70% Us	5% -40% Us	400 ± 10%	9W± 10%
72V	70% Us	5% -40% Us	576 ± 10%	9W± 10%

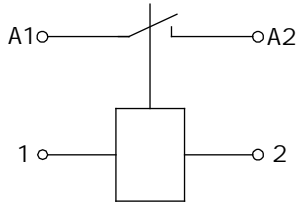
AZJ 200D AZJ200D Coil Parameters

			Coil Resistance		Starting Power	Holding Power
			Starting	Holding		
12V	70% Us	5% -40% Us	2 ± 10%	48 ± 10%	72W± 10%	4W± 10%
24V	70% Us	5% -40% Us	7.5 ± 10%	190 ± 10%	75W± 10%	4W± 10%
36V	70% Us	5% -40% Us	17.5 ± 10%	430 ± 10%	75W± 10%	4W± 10%
48V	70% Us	5% -40% Us	31 ± 10%	768 ± 10%	75W± 10%	4W± 10%
60V	70% Us	5% -40% Us	48 ± 10%	1200 ± 10%	75W± 10%	4W± 10%
72V	70% Us	5% -40% Us	68 ± 10%	1500 ± 10%	75W± 10%	4W± 10%

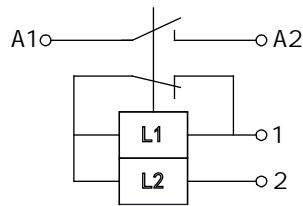
Model Coding



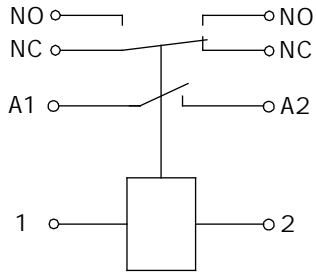
Wiring Diagram



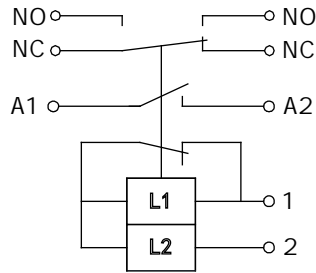
AZJ200S()
AZJ200S Wiring Diagram
Without Auxiliary Switch



AZJ200D()
AZJ200D Wiring Diagram
Without Auxiliary Switch



AZJ200S()
AZJ200S Wiring Diagram
with Auxiliary Switch



AZJ200D()
AZJ200D Wiring Diagram
with Auxiliary Switch

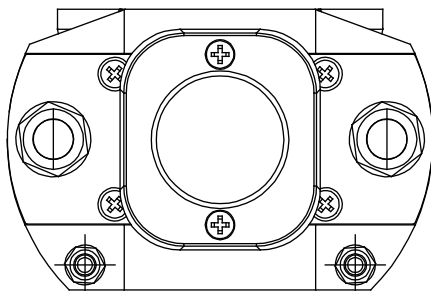
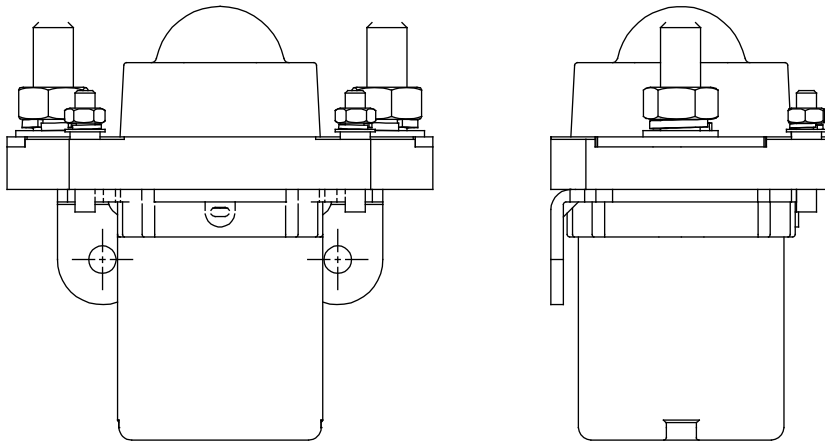
NC
NC Auxiliary Switch Normally
Closed Contact

NO
NO Auxiliary Switch Normally
Open Contact

A1,A2
A1, A2 Main Terminal Wiring

1,2 12-72V
1, 2 Coil Wiring 12-72V

Outline Installation Dimension Drawing



2-M8

6-10N.m 12N.m Max

2-M4

1.2-2N.m 2.0N.m Max



Usage Cautions

1.

the samples provided by AOKAI and the corresponding signed and controlled specification.

2.

to obtain more technical support.

3.

4.

5.

with thermal radiation. It is recommended to use it with a cooling fan.

6.

30cm

7.

8.

9.

10.

tion device.

11.

12.

It is strictly prohibited to wiring when power on.