



fE
Features

1. 125A ;
Continuous 125A load.
2. ;
It has one sets of normally open and one sets of normally closed contacts.

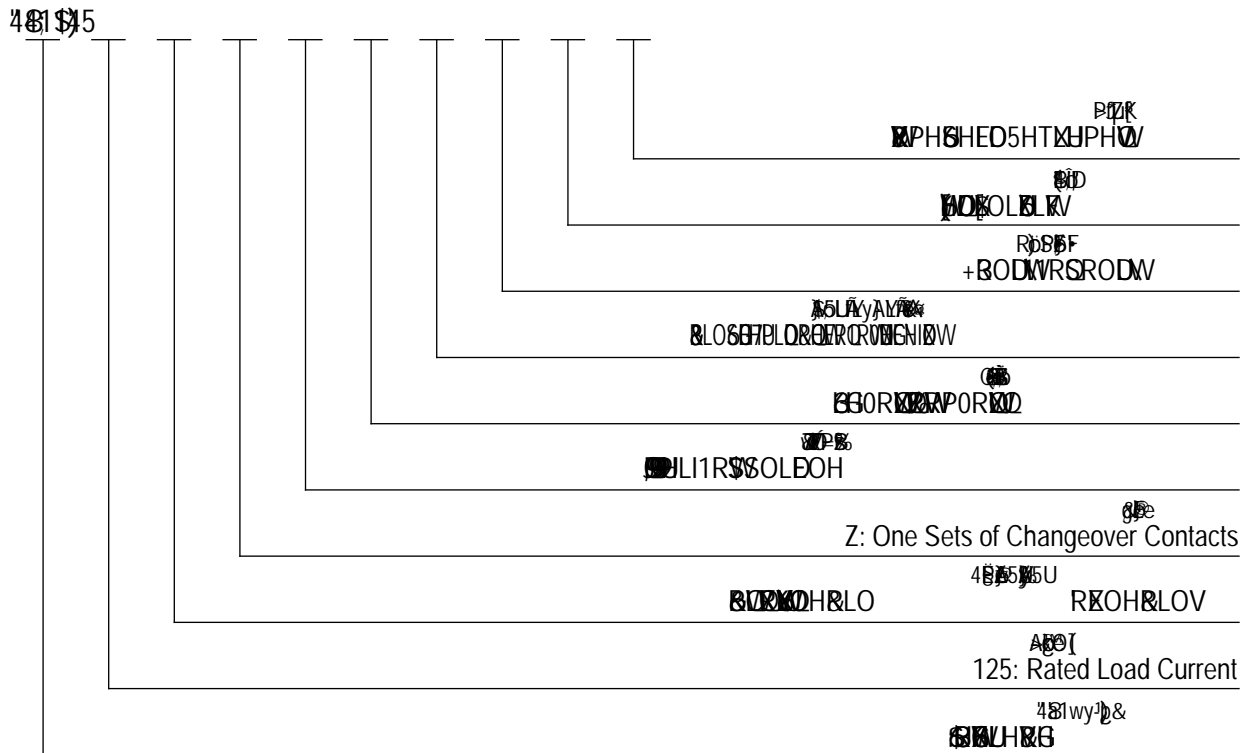
at23
Performance Parameters

Contact Arrangement		
	0.5m	
	80mV(at 125A)	
	7le, 1s	30ms
	-40 ~-65	30ms
	M8	50Hz/60Hz 1000VAC/1min
	3.5g,10~200Hz,1/2	50Hz/60Hz 1000VAC/1min
	20 ~90 RH	100M 1min
	57x48x89mm	50M 1min
	6000	
	8-10N.m	

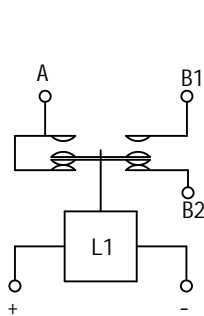
ASW125SZ Coil Parameter

Ec kn' J c nh cig	Rkemwr' J c nh cig	J 8 E8 tc rc wh' J c nh cig	J 8 Holding Current	Coil Power Consumption
12V	70% Us	10% Us	1A	7.15W
24V	70% Us	10% Us	0.6A	7.15W
36V	70% Us	10% Us	0.6A	7.15W
48V	70% Us	10% Us	0.5A	7.15W
60V	70% Us	10% Us	0.25A	7.15W
72V	70% Us	10% Us	0.2A	7.15W

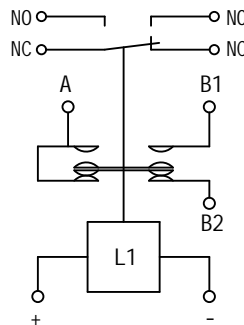
Model Coding



Wiring Diagram



Wiring Diagram Without Micro Switch



Wiring Diagram with Micro Switch

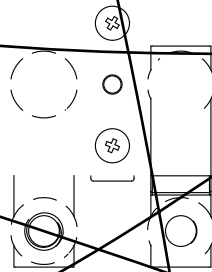
NC
PE: Cwzknkctm' Ec b h ceh

NO
PC: Cwzknkctm' Ec b h ceh

+ -
+ Coil Terminals

Outline Installation Dimension Drawing

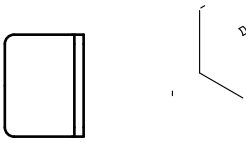
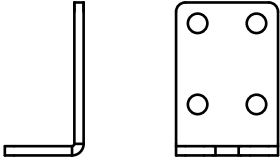
ASW125SZ



2-M8
Nc cX K ktkb i 4/0:
8-10N.m
Vc tswg :/32P0o

T=0.8x6.3
Ec kn K ktkb T V1 20.805
Spade Terminal

Outline Installation Dimension Drawing



Usage Cautions

1.

V\ ku' X c ewogb h' ku' c b nm' hc t' ewuh c ogt' ugngeh kc b' tghgtgb eg. CC MCK' \ cu' h tk
kb' h \ ku' X c ewogb h O' Rtc X weh' urgekhech kc b u' cb X' rctcogh gtu' ocm' dg' e\ cb ig)
kb ec b ukuh gb h' dgecwug' c h' b c h' wrX ch gX' kb' h kogO' Hc t' h \ g' urgekhe' rctcogh
h \ g' ucorngu' rtc xkX gX' dm' CC MCK' cb X' h \ g' ec ttgurc b X kb i' ukib gX' cb X' ec b h t

2.